



Quickmount Curtains

The free-flow curtain system for areas where safety is key.
(Ideal for schools & nurseries.)

The extra-safe curtain system - ideal for schools and nurseries.

Recommended for any environment where safety is of paramount importance.

Grey polymer headrails come in standard lengths that are simply screwed/ bolted into position. (*Fixings not supplied.*)

Can be surface or soffit mounted and ganged up/cut to fit any width of door.

PVC strips come with holes pre-punched ready to hang.

They simply push onto the headrails without the need for metal suspension plates, so no-one can be hurt if a strip is dislodged.

Instant Benefits:

- Cuts energy bills by preserving heat and/or air conditioning
- Totally safe if a strip detaches
- Keeps out dust, dirt, noise and flying pests
- Replacement strips available as cost-effective way to prolong the curtain's working life

Universal rail for surface OR soffit mounting.



50% overlap (up to 2.5m)



100% overlap (up to 3m)



Simple clip-together connections allow rail sections to span any width.

For more information or to order:

Call: 01275 810289

Email: sales@redwoodstripcurtains.co.uk

DOORSTRIP QUICKMOUNT™ SYSTEM

Installation

Important

Prior to installation, unroll all the PVC strips and place them on a clean, flat surface in a warm atmosphere for a minimum of twenty-four (24) hours. This will allow them to return to their original form.

1. Mount the QuickMount™ headrail in either the Soffit or Face Fixing positions shown in Diagrams 1 and 2 using suitable fixings.

2. Begin attaching the PVC strips. Start with numbers 1 and 3 (see Diagram 3). Hang with their concave sides towards you, leaving the desired spacing between the strips as indicated by the Strip Placement Guide.

Fit the strips onto the headrail pegs as follows: with the top of the strip angled back towards you, insert the bottom of the oval retaining pegs into the pre-punched holes. Then, using a quick up and over motion, lift the top part of the strip onto the top of the pegs until the strip rests securely in position.

3. Attach strip number 2 with its concave side facing away from you so that it interlinks with strip numbers 1 and 3.

4. Attach all remaining strips in the same manner as in Steps 2 and 3, making certain that all the concave sides face each other (Diagram 4).

5. Once all of the strips have been attached, the strips should be trimmed 20mm above floor level to allow them to hang freely. The strips can be trimmed using a standard craft knife.

Diagram 1
Soffit Position

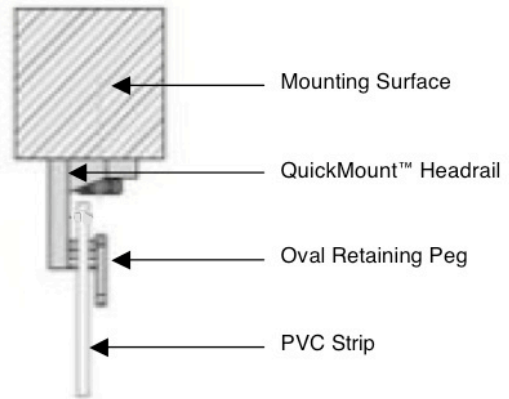


Diagram 2
Face Fixing Position

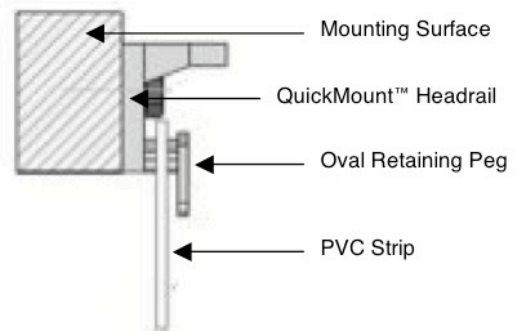


Diagram 3
Front View Strip Spacing

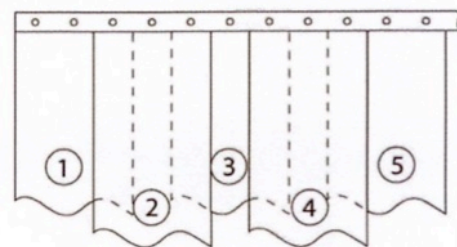


Diagram 4
Concave Sides Interlinking



DOORSTRIP

MEASURING FOR A QUOTE IS EASY...

So we can size and spec your curtain correctly, we need to know the height (we call this the 'drop') and width of the door opening. Plus... its location and the type of traffic that may need to pass through it (e.g. people, pallet trucks, forklifts, etc). If you can provide a photo or two, even better.

Location & fitting: Unless told otherwise, we assume curtain rails will be face fitted, internally to an existing structural surface (i.e. a beam or lintel) which spans the opening. Ideally, curtains should be slightly wider than the opening to make them as effective as possible. If obstacles at the sides prevent this, please tell us so we can size the curtain to the available space. If you need a beam to hang your curtain from, we can supply this.

Standard pedestrian door

Drop (D) From the underside of the frame at the top, to the floor. **Width (W)** Between the inside edges.

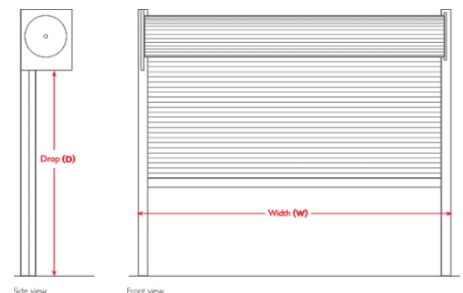
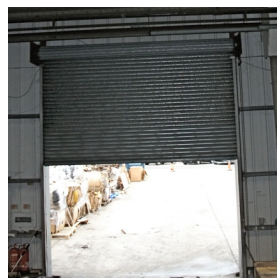
Roller shutter door

Drop (D)

With the door fully rolled up, measure from just below the door spool, to the floor.

Width (W)

Measure between the outer edges of the vertical door runners.



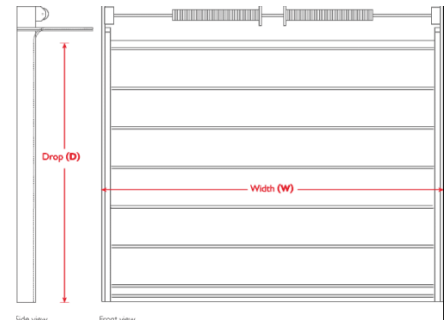
Sectional overhead door

Drop (D)

Measure from just beneath where the curve of the door runner begins, to the floor.

Width (W)

Measure between the outer edges of the vertical door runners.



Folding shutter doors

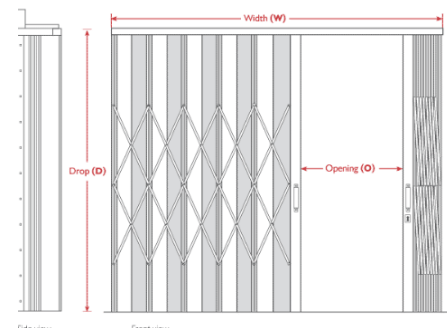
Drop (D)

From the top of the door runner, to the floor.

Width (W)

Between the outer edges of both doors.

If you never open the doors fully, just measure the section which you do open **Opening (O)**



We always recommend curtains are fitted internally so the strips can be protected from the worst of weather. Fitting outside can accelerate the speed at which the PVC becomes damaged or loses clarity.

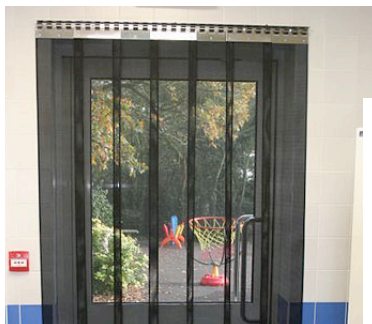
Also available from Redwood



Chiller cabinet curtains

For upright multi-deck units or deli-counters.

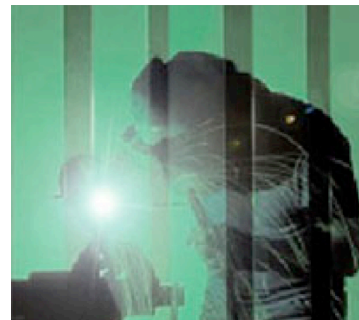
Can cut energy / running costs by up to 60%.



Insect curtains

In black suntex mesh or perforated clear PVC.

No better way to keep out flying insects and pests.



Anti-UV curtains

Health & safety protection in a range of colours.

Basic & EN1598 grade available.



Child-safe curtains

Ideal for schools and public buildings.

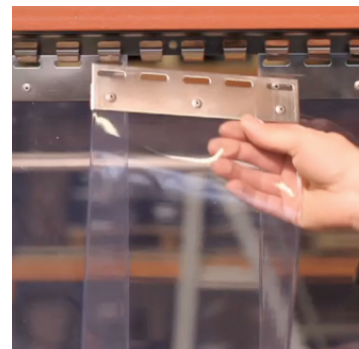
Extra safe if strips are detached by mis-use.



Crash doors

For openings where strip curtains aren't practical.

Available in range of styles to suit range of locations.



Replacement strips

For all types of hanging rail systems.

Quick, affordable way to prolong a curtain's life.



BrushStrip excluders

Keep our draughts and crawling insects.

With 3 angled heads so it can be fitted anywhere.



Steel beams & brackets

For supporting curtains where no existing structural support is available.

Delivered direct to site.



Animal curtains

Made to withstand the toughest of customers.

Up to 10mm thick.

REDWOOD STRIP CURTAINS LTD

Unit 21, Southfield Road Trading Estate, Nailsea, Bristol. BS48 1JE

Tel: 01275 810289 Email: sales@redwoodstripcurtains.co.uk